

WATT'S NEW AT HUTT ELECTRIC

Welcome to our 197th
edition of our newsletter!

May 2011

"We're here to help you help your custom-

This newsletter will provide you, our customers, with information on new technologies, products, discontinuations, etc. in the electrical industry. It will also provide you with information on any projected price increases, price decreases, and any 'special buys' at Hutt Electric Supply.

NEC Code Questions and Answers.....

Q. When is the neutral conductor required to be provided at the switch location for lighting loads?

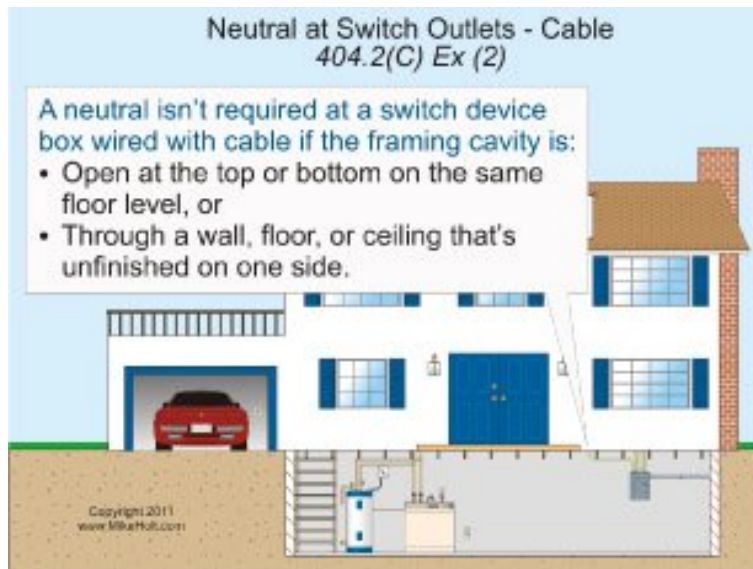
A. Switches controlling line-to-neutral lighting loads must have a neutral provided at the switch location [404.2(C)] unless either of the conditions of the following exception is met.

Exception: The neutral conductor isn't required at the switch location if:

1. The conductors for switches enter the device box through a raceway that has sufficient cross-sectional area to accommodate a neutral conductor.
2. Cable assemblies for switches enter the box through a framing cavity that's open at the top or bottom on the same floor level, or through a wall, floor, or ceiling that's unfinished on one side, as shown in the Figure.

Note: The purpose of the neutral conductor is to complete a circuit path for electronic lighting control devices.

All questions and answers are based on the 2008 NEC, taken from EC&M (http://ecmweb.com/nec/code_qa/)



Price Increases

- ♦ 4/1/11
REMKE
- ♦ 4/1/11
RJB/GALVA-CLOSURE
- ♦ 4/1/11
LITTLEFUSE
- ♦ 4/1/11
KILLARK
- ♦ 4/1/11
CROUSE-HINDS
- ♦ 4/1/11
RONK
- ♦ 4/26/11
BRYANT
- ♦ 5/1/11
LEW
- ♦ 5/1/11
STURGEON BAY
- ♦ 5/15/11
MINERALLAC/CULLY
- ♦ 6/3/11
MIDWEST
- ♦ 7/1/11
BRIDGEPORT
- ♦ 7/4/11
IDEAL

Closed...

We will be closed on Monday,
May 30th for the Memorial Day
holiday. Have a safe holiday!





Special of the Month

R281CB1 Midwest 200a main breaker, horn by-pass meter socket combo. with 4 additional provisions and feed thru lugs.

\$ 165.00 Ea

R281CB1034 Midwest 200a main breaker, lever by-pass meter socket combo. with 4 additional provisions and feed thru lugs.

\$ 315.00 Ea

RENTALS

Equipment:

- ◆ Mini-Tower Scaffolding
- ◆ 22' Scissors Lift
- ◆ Tractor/ Loader
- ◆ 3-Point Disc/ Cultivator
- ◆ 3-Point 48" Brush Mower
- ◆ Tandem Axle Trailer
- ◆ Mini Excavator
- ◆ Skid Steer



THE

HUTT ELECTRIC TEAM

Rick Ewert (ext.13)
President, Purchasing, Sales

Kathy Ewert (ext.16)

Office Manager,
Accts. Receivable/Payable

Mike Scarpaci (ext.11)

Inside Sales and Quotes

Brian Feit (ext.14)

Outside Sales South

Lee Schreiber (ext.19)

Sales, Warehouse, and

Inventory Control

Gerry Jochimsen (ext.21)

Sales and Warehouse

Alison Luedtke (ext.15)

Office Administration Asst.

Bill Stone

Delivery

Don Westphal

Delivery



HUTT ELECTRIC SUPPLY

1200 East Ash Street

PO Box 40

Abbotsford, WI 54405

Phone: 715-223-3651

Visit us online!
www.hutt-online.com